

Technical Data Sheet

Electricity-Free Incubator 37 °C

Worldwide unique!



Description

Independent of electricity, lightweight and compact. LETZTEST has invented a chemical incubator that revolutionizes water quality analysis for areas with unstable power supplies. Activate it in the sun, or with hot water, or with a USB heating mat. Once activated, the incubator will keep the temperature of 37°C +/- 0.5°C for at least 24 hours. That means you can incubate your microbiological samples without electricity and without batteries! It is insensitive to errors and damage.



Figure 1 – Microbiological water analysis in remote places is easy and independent with the non-electric incubator from LETZTEST.

Specifications

- Art.: 115178
- Presentation: insulated bag made of fibreglass and aluminium
- Dimensions: 400 x 300 x 130 mm
- Weight: 4.5 kg
- Temperature: 37°C +/- 0.5°C, > 24 h
- Capacity: e.g., 25 LETZTEST tubes or 40 dehydrated Compact Dry culture plates

- **Special feature:** the incubator can also cool the samples down to 37°C if the outside temperature is higher

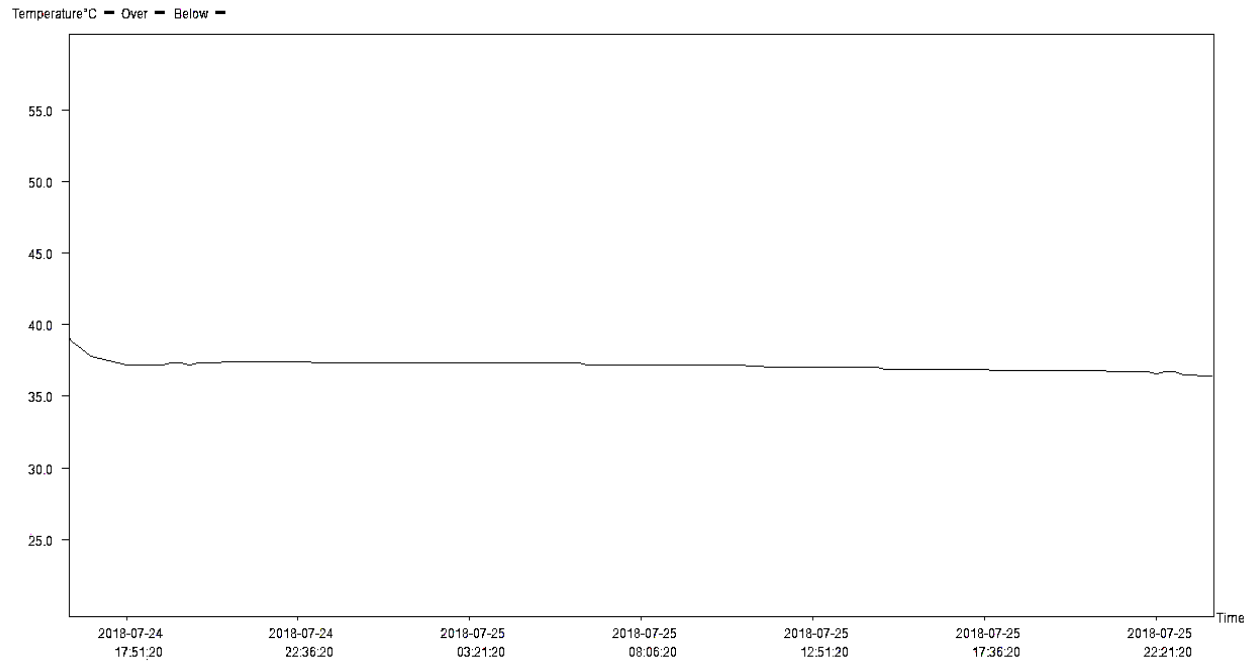


Figure 2 - The incubator maintains the internal temperature at 37°C for more than 24 hours.

Content

- Heating plates; 5 pcs.
- Digital temperature data logger via smartphone app; 1 pc
- Waterproof bag for optional activation with hot water; 1 pc
- USB 5V heating pad for optional electrical activation; 1pc

Production

Originating from [Letzner Pharmawasseraufbereitung GmbH](#) (now EnviroFALK PharmaWaterSystems) in Germany, LETZTEST is a company that places great importance on the quality of its equipment. Intermediate production steps and finished products are checked against specified release criteria.

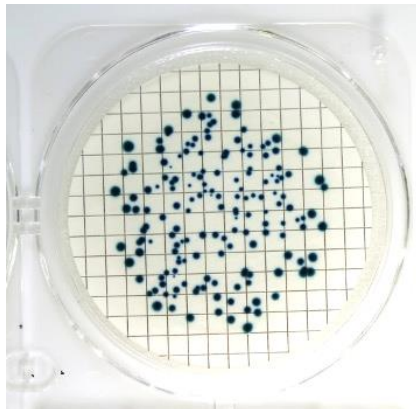
Procedure



1 - Liquefy the product inside the black heating plates by using the sun, or hot water or the USB heating mat.



2 - Incubate your microbiological samples for 24 hours at 37°C. The incubator keeps the perfect temperature without electricity and batteries.



3 - Read your result.

Easy and direct Support

Each kit contains a **QR code that leads to a [practical training video](#)**. In case of further questions, the end user can also directly and easily contact a LETZTEST technician via a second QR code.



Figure 3 – A QR code in each kit leads you to a training video