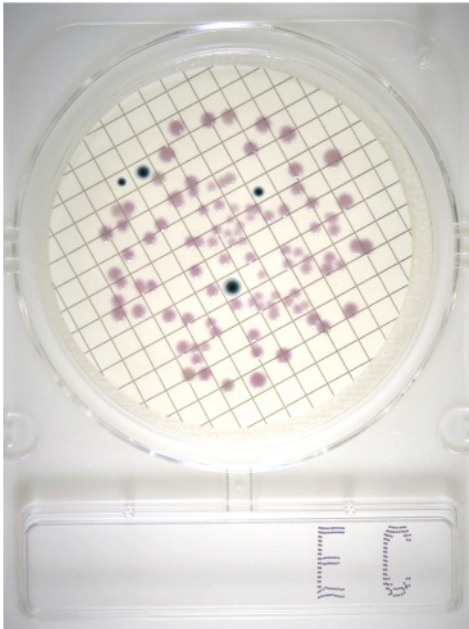


COMPACT DRY EC PLATES



“AN EASY WAY TO DETECT *E. COLI* & OTHER COLIFORMS IN WATER”



GENERAL INFORMATION

The usage of our **Compact Dry EC PLATES** is a simple and safe way for the determination and quantification of *E. coli* and other coliform bacteria in water. Especially for settings with relatively poor infrastructure.

The plates consist of a special 50 mm diameter petri dish containing a detection specific dry nutrient pad for *E. coli* and other coliforms. The medium contains two kinds of chromogenic enzyme substrates: **Magenta-Gal** and **X-Gluc**. Due to these substrates *E. coli* forms blue to blue purple colonies while coliforms show a reddish, red violet or pink coloration. The total coliform group count is the sum of all colonies identified as coliforms or *E. coli*.

FEATURES AND BENEFITS

- **Ready-to-use**
- **Storage 5-40°C (no fridge needed!)**
- **Shelf life 18 months**
- **Max. 70 seconds „hands-on time“**
- **Write sample ID on front part**
- **Incubation time 24 hours at 35-38°C**
- **AOAC, MicroVal and NordVal approved**
- **ISO16140**

MEMBRANE FILTER METHOD: PROCEDURE FOR LETZ-DRY E&C PLATES

Needed items:

- Letz-Membrane Filtration Kit
- Letz-CME Membranes
- Sterile purified water
- **Compact Dry EC PLATES**
- Letz-Incubator 35-38°C

1. Take off the cap of a E&C plate, pipette 1mL of sterile purified water in the middle of the dry sheet

FIELD OF USE

Are you planning to do a household water quality survey? In a rural area? With no water testing laboratory close by? Our **Compact Dry Plates** reduce complexity and time and are the ideal solution for the determination and quantification of *E. coli* and other coliform bacteria.





Contact

LetzTest

Robert-Koch-Str.1
42499 Hückeswagen
Germany

Tel.: +49 (0) 21 92 / 92 17-31

Mobile: +49 (0) 162 / 62 78 787

Fax.: +49 (0) 21 92 / 92 17-33

Email: info@letztest.com

Web : www.letz-test.com

part of Letzner Pharmawasseraufbereitung
GmbH

2. Remove the funnel of the sterilized Membrane Filtration Apparatus and place a sterile CME Membrane onto the support
3. Set the funnel, pour the sample water in the funnel and filter the sample under reduced pressure
4. After the filtering sample, wash the inner surface of funnel with 20 – 30 mL of sterile purified water and filter it.
5. Detach the funnel and take the membrane filter out with sterilized tweezers
6. Place the filter on the prepared **Compact Dry EC plates** without bubbles. Grid side up
7. Turn over the plate capped and incubate for 24 hours at 35-38°C
8. After incubation, the colonies are identified and counted.